

# Evaluation of EU Funded Developments for Roma Integration

Methods and First Findings

of the First Phase of the Ongoing Evaluation

Nóra Teller, Metropolitan Research Institute  
(Városkutatás Kft.)



Pannon.Elemző Iroda Kft. ☐ Hétfa Elemező Központ Kft. ☐ Városkutatás Kft.

## Structure of the presentation

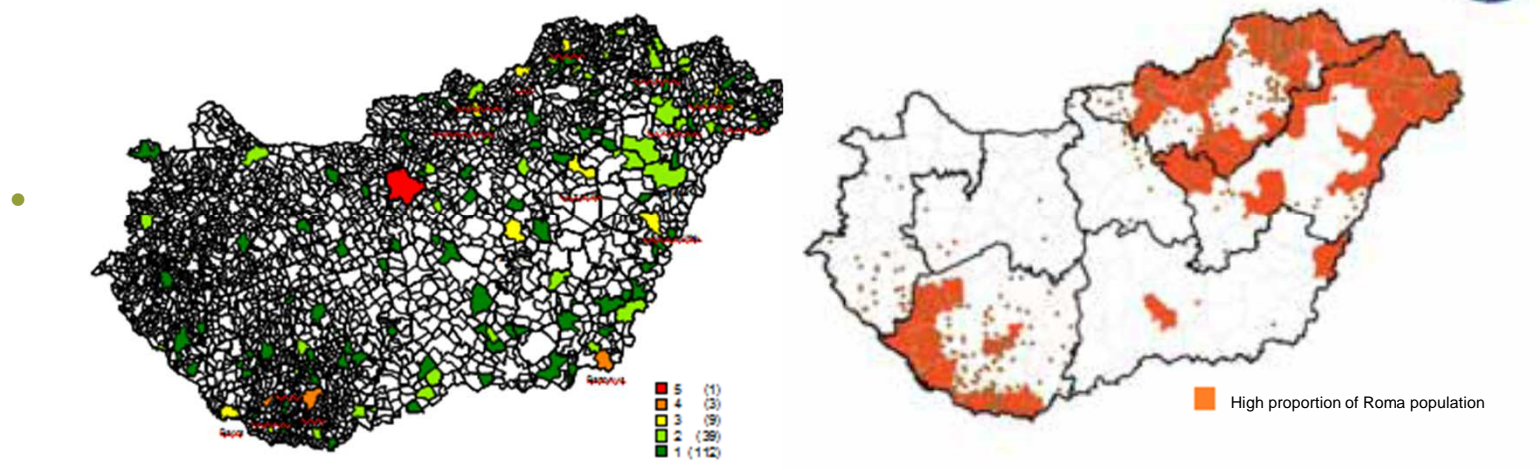
- 1. The goal of the ongoing evaluation and questions**
- 2. Methodology**
  1. Two dimensions and three levels of analysis
  2. Data collection issues and harmonisation of methods and questions
- 3. First findings**
  1. Synthesized goals for Roma integration and potential effects of the interventions
  2. Research hypotheses
- 4. Main conclusions and questions**

## 1.1 The goal of the evaluation

- **Key issue:** Uncovering those aspects, conditions and regulatory frameworks that facilitate, or on the contrary, hinder achieving the goals set out in the EU 2020 Strategy and the European Framework for National Roma Strategies
- **Sub-set of goals:**
  - On-going evaluation 5 ESF interventions serving education and labour market integration and one ERDF intervention (urban regeneration), focusing on:
    - Conditions that support or constrain achieving the interventions' goals
    - The extent to which these interventions serve the integration of Roma in general
  - Further tasks:
    - Defining recommendations for the next planning period
    - Piloting methods for future evaluations

## 1.2 Basic data of the interventions

- The **budget** of the interventions range from 2.9 million to 83.9 million EURO
- Total available funding is 0.7% of the EU Funds for the current period
- The **total number** of projects granted: 317
- The **absorption level** within the interventions: 35% to 85%, depending on the intervention
- Average budgets per project: 140,000 EURO to 1,74 million EURO
- Average duration: 1.5-2 years
- **Locations:**



## 1.3 Questions to be assessed

- (1) Planning phase (principles of Roma inclusion in the planning phase)**
- (2) Evaluation phase (principles of Roma inclusion)**
- (3) Implementation phase**
  - Measuring levels of inclusion
  - Assessing reaching the final beneficiaries, among them Roma (participation of Roma in the projects – definition and data collection issues)
  - Assessing complexity of interventions
  - Assessing effects on the community
- (4) Factors influencing efficiency and sustainability of results**
  - Intended and unintended results
  - Indicators and whether they can be achieved
  - Conditions for sustainability
- (5) Lessons for future calls and for the institutional settings**

## 2.1 Methodology: Dimensions and levels

### 2 Dimensions

- Project-wise
- Territorial and regional effects, synergies

### 3 Levels

- Projects
- Interventions and their institutional framework
- „Development policy” (settings for using EU funds)

### Reasons:

- Roma inclusion is long-term
- Roma inclusion is conditioned by various processes
- „Development policy”: additional activities and inputs to mainstream policies

## 2.2 Methodology: Data collection issues

### **Quantitative data: Measuring participation and efficiency**

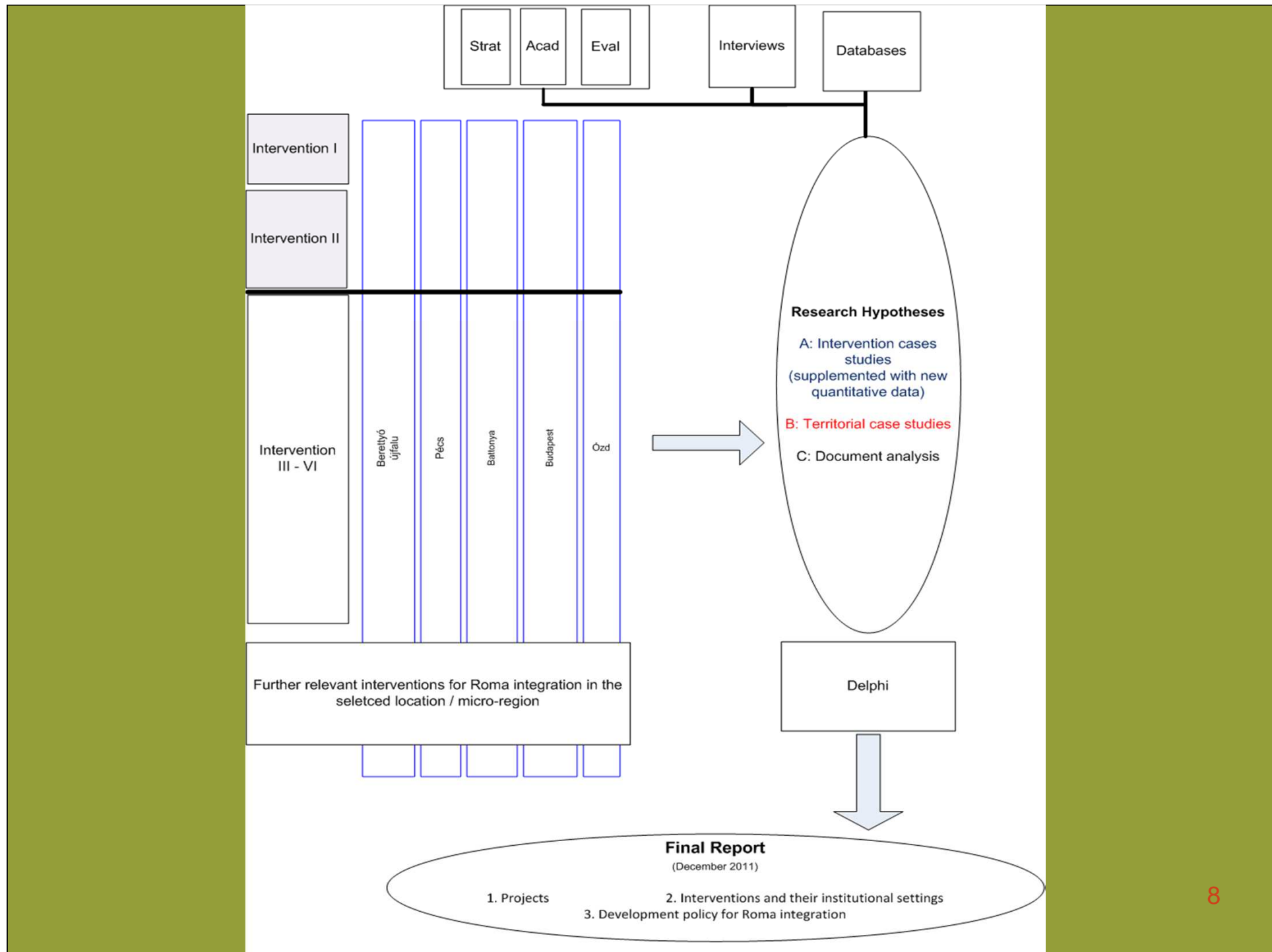
- Databases of the NDA
- Databases of HCSO
- Data collected for Intervention I and II

### **Qualitative data: Assessing planning, evaluation, measuring participation, efficiency, synergies and sustainability**

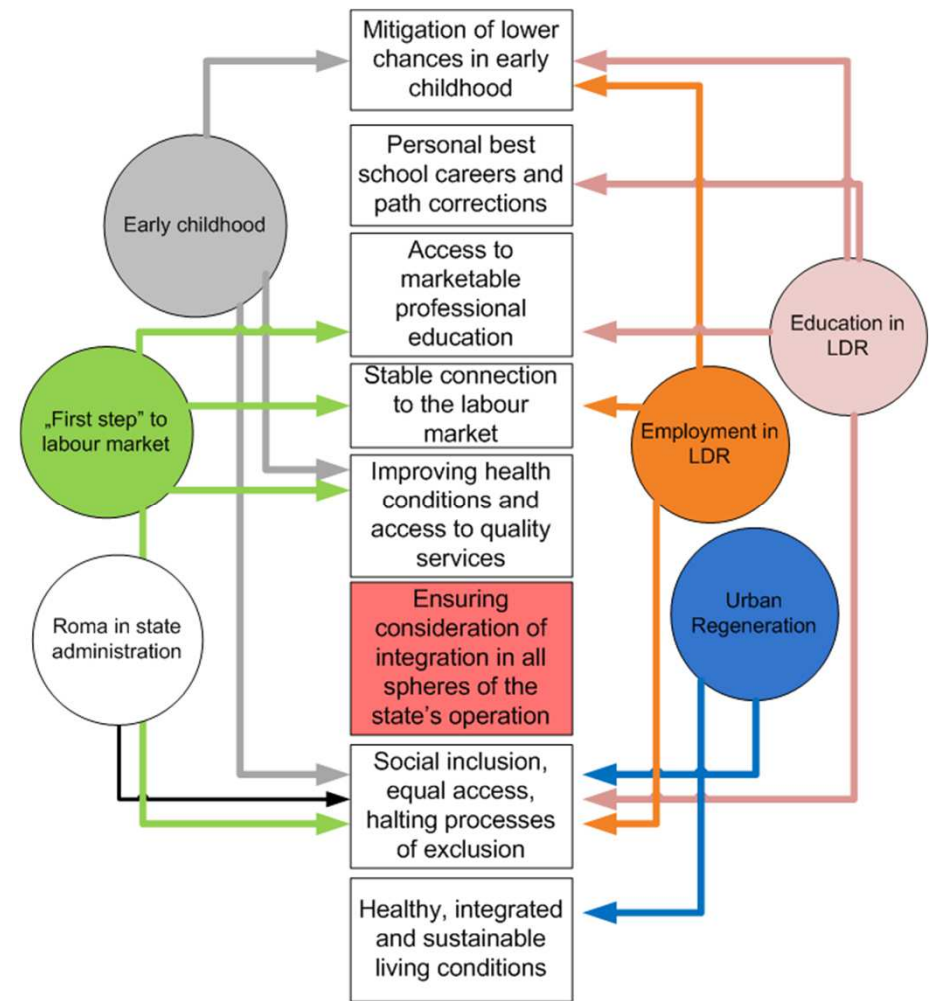
- Interviews
- Focus groups
- Delphi

### **Document analyses: Assessing adequacy of tools, recommendations**

- Strategies
- Former evaluations
- Academic works



### 3.1 Synthetised goals for Roma integration



## 3.2 Research hypotheses (1-3)

- Based on **review** of previous evaluations, academic resources, available data sources and first interviews
- **Research hypotheses** serve framing the evaluation questions and formulating recommendations
- Method for **testing** them: throughout the three levels and the two dimensions, but focusing on the „development policy level”

### Hypotheses:

1. **Development interventions** are additional, but where they are disconnected from strengthening mainstream services, their Roma integration effect is marginal.
2. The **targeting** applied is territorial and not ethnic, but if territorial targeting is not supported by equal access mechanisms, it is not sufficient.
3. **Written concepts** and strategies for Roma integration have little to no impact on the efficiency of development policies.

## 3.2 Research hypotheses (4-7)

### Hypotheses (cont.)

4. **If funding steered to mainstream services frees up resources for broadening service delivery, Roma will have better access to such services. This effect is stronger than that of „innovative” interventions.**
5. **Current development policy arrangements are incapable to reach the most excluded segments of the Roma population.**
6. **To reach Roma and achieve their participation in development projects, influencing local governments’ policy developments and strengthening NGO-s in doing so at the local level is a precondition.**
7. **The most common way of funding allocation, that is open calls, discloses regions and locations with low institutional capacities from accessing funding.**

## 3.2 Research hypotheses (8-10)

### Hypotheses (cont.)

8. Sectoral policy developments are in flow and cannot frame and strengthen „innovative” interventions via feedback mechanisms. There is no mainstream sectoral policy basis for time-consuming adjustment periods. Thus, innovative and vital interventions remain short-lived „pilots”, and are vulnerable to absorpotion pressure and other macro-economic conditions.
9. Current development policy procedures are inadequate to accommodate atypical interventions that are most proper tools in projects for excluded groups, among them Roma. Essentially, „quality” and „trust” cannot be measured via normally applied and required indicators.
10. There is no guarantee to sustain organisational capacities among those NGOs that are active in Roma integration, and there is no mainstreaming of their achievements. This hinders effectiveness of interventions, and makes long-term inclusion processes impossible.

## 4.1 Main conclusions and questions

1. **The selected interventions only partially target and include Roma, although their tools and activities would be adequate and useful.**
2. **Current design of calls and procedures pushes beneficiaries to stay away from including high risk-high cost groups among the final beneficiaries, among them Roma. There is no institutional design to facilitate and guarantee inclusion of Roma, and (pro-) Roma NGOs in planning, implementation and sustaining results.**
3. **Only mid- and long-term interventions, fostering access to quality mainstream services are adequate in tackling exclusion, still, interventions remain constrained to short-term projects, captured by the mono-funding trap, and non-coordinated open call procedures challenging sustainability of results.**
4. **Assisted planning and supported implementation facilitate the inclusion of Roma.**

## 4.2 Main conclusions and questions

**What are the options of development policy for:**

- 1. providing equal access to quality public services for marginalised communities?**
- 2. ensuring equal opportunities for Roma within calls for marginalised communities?**
- 3. providing easy access to EU funds for new actors (e.g. Roma NGOs without experience with EU funds)?**

-

**Thank you for your attention.**

**Pannon.Elemző Iroda Kft.  
HÉTFA Elemző Központ Kft.  
Városkutatás Kft.**

More details about the evaluation are available at <http://pannonelemzo.hu>.